



**TABARAK C.N.C Ltd.**

Jerusalem 9780053, Yatsiv 11 St,

P.O.Box: 47028

Tel: 02-5830815 Fax: 02-5322723

**TIGER<sup>®</sup> ULTRA DIGITAL**  
**TIGER<sup>®</sup> HIGH DIGITAL**  
**DIGITAL TO GO!**



THE LIGHTEST  
TIG-DEVICE IN  
HIS CLASS

from **7,5 kg**

**TIGER<sup>®</sup>**  
The benchmark for modern welding



## TRADES

The mobile solution for all welding tasks that trades encounter every working day. Regardless of whether the task involves the processing of stainless steel, aluminium, steel, copper or titanium in different material thicknesses.

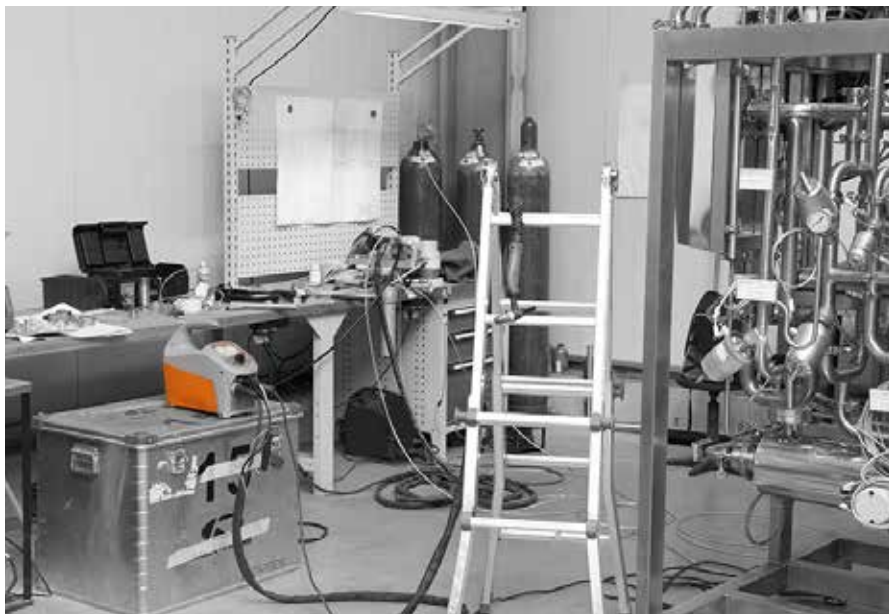
The **TIGER® digital** can do it all!



- TIGER® digital: Spot-welding and welding perfection. Success with REHM HYPER.SPOT and RHEM Hyper.Puls.**

The **TIGER® digital** provides excellent quality, perfect weld seam appearance and significantly reduces rework. All of these advantages together with unparalleled mobility. The gas cooled version has a maximum weight of 7.9 kg making the **TIGER® digital** the lightest TIG device in his class.





## INDUSTRY

Welding in the assembly and maintenance area is highly demanding. Mobility and the simple handling of the unit are particularly important requirements in practice.

Due to a new, intuitive operating concept the **TIGER® *digital*** provides maximum reliability when selecting welding parameters, which in turn enhances user friendliness. The digital display makes it easier to achieve the right setting reliably and quickly, even for an inexperienced welder.

■ **TIGER® *digital*: The result counts.**  
Which is why the perfect arc is a must.

The **TIGER® *digital*** has **8 process variants** and masters any application with the correct arc.

THE LIGHTEST  
TIG-DEVICE IN  
HIS CLASS

from **7,5 kg**

**TIGER**®

The benchmark for modern welding



## Practical handle



The handle on the **TIGER® digital** offers the most optimum convenience. An interference-free storage solution for stowing the hose pack and associated equipment, which ensures welders always have their second hand free.

## Everything to hand



The **TIGER® digital** draw ensures that all of the unit's wear parts are to hand. Everything in one place, no more running around looking for parts. That saves time and money.

## Dropping allowed...



and that from a height of up to 90 cm. The **TIGER® digital** housing is designed so that the impacts that occur from being dropped from this height will not interfere with the performance electronics.

### Each job has one button

Storing and recalling the most important device settings cannot be any quicker.

### Everything in digital view

Everything at a glance in an excellent graphic presentation. Protected by a shock-resistant plastic screen, the display is simply more robust than conventional displays.

### A button for everything

The R-Pilot rotary encoder, especially developed for tough applications, intercepts mechanical effects. The housing absorbs forces before they can damage the electronics.

### Dirt and filth don't matter

The electronics space is encapsulated and is always kept clean and protected. Contaminated air and grinding dust from the working environment are channelled through a special air channel.



THE LIGHTEST  
TIG-DEVICE IN  
HIS CLASS

from **7,5 kg**

**TIGER**  
The benchmark for modern welding

### The QUICK CH

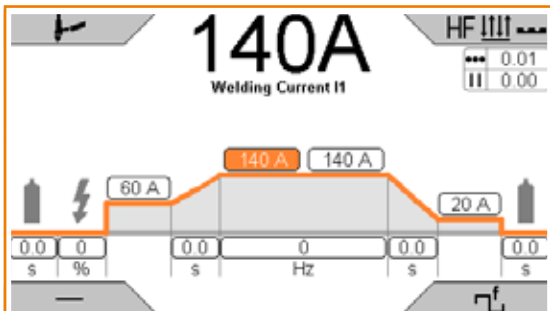
Easy and fast storage of fo



## The benchmark in operating welding machines

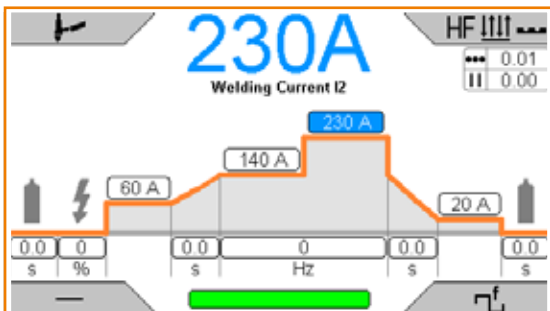
SIRIUS is a completely new type of digital operating system.  
 SIRIUS simplifies the operation of complex digitally controlled processes.  
 SIRIUS offers graphically dynamic and transparent visualization.  
 SIRIUS enjoys the highest user acceptance.  
 SIRIUS makes complex things easy.

### The classic screen

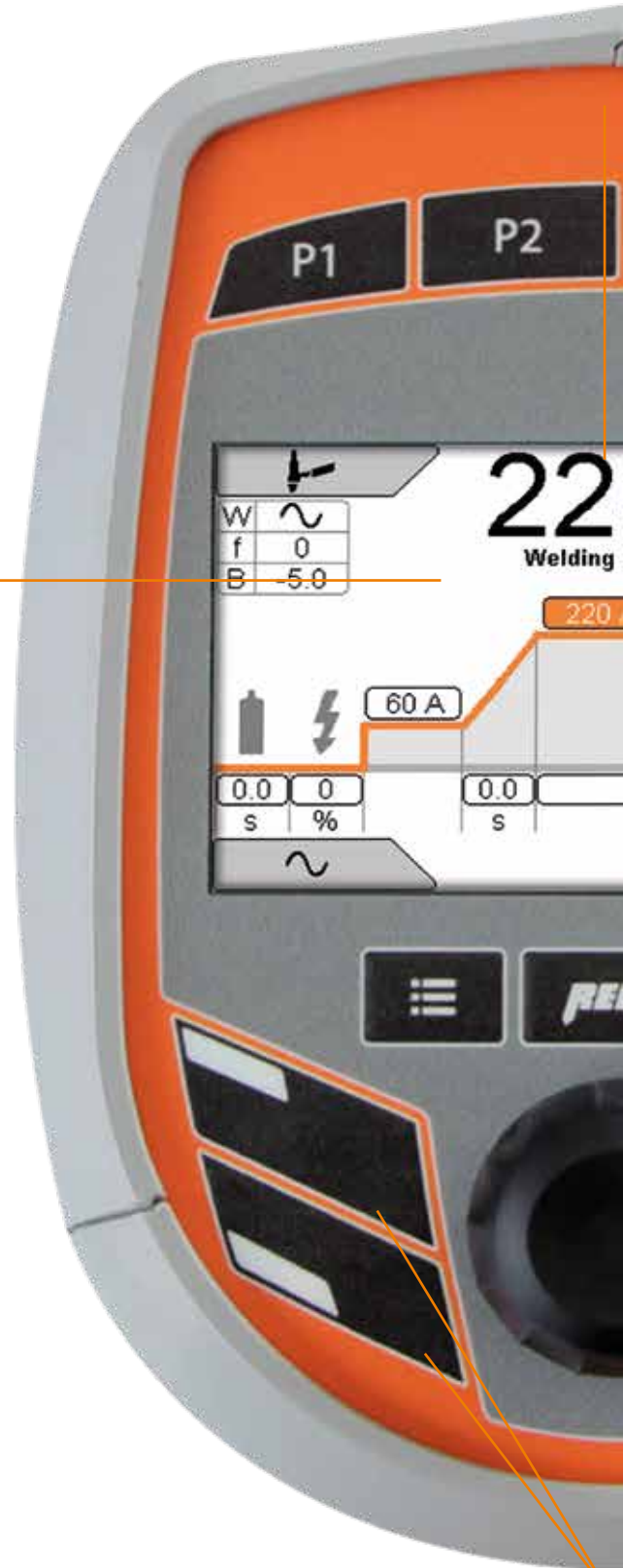


The self-explanatory graph shows all settings at a glance. Interdependencies become transparent and understandable.

### Dynamic graphic display



Changes to welding parameters are graphically displayed. Erroneous settings are immediately recognised. Only that which is currently active is actually displayed.



Quick and easy navigation in th

### Four multifunctiona

## VOICE buttons

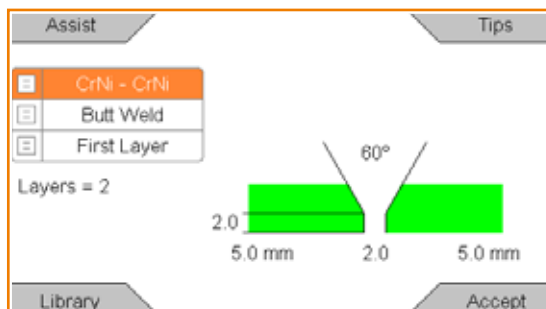
our current welding tasks.



the particular application field.

## al selector buttons

### Assist – help when its needed



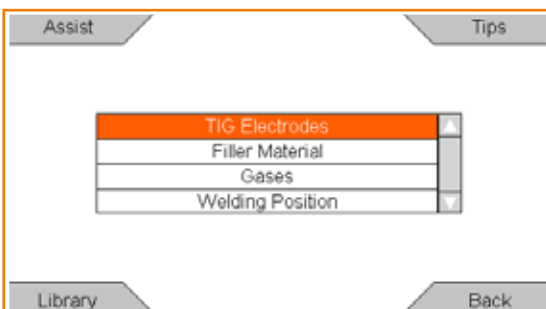
New and only available with REHM devices  
Possibility of setting a TIG welding device.  
The setting is performed by selecting the base material, shape of the weld and material

### Welding tips for everyone

Assist	Tips
Gap Width	2.0 mm
Number of Layers	2
Gas Type	---
Gas Flow Rate	7.0 l/min
Size of Gas Nozzle	10.0 mm
Preheat Temperature	---
Filler Material Ø	2.0 mm
Electrode Type	WCe 20
Tungsten Electrode Ø	2.4 mm

The TIGER® digital provides support by offering comprehensive information about the welding task the user wishes to execute. This enhances reliability and quality.

### The complete Know-how



Even in the selection of gases, electrodes or filler materials, TIGER® digital supports the user. Which filler material can be used? The TIGER® digital has the answer.

## TECHNICAL DATA

	182 DC+182 AC/DC HIGH <i>digital</i>	182 DC+182 AC/DC ULTRA <i>digital</i>	230 DC+230 AC/DC HIGH <i>digital</i>	230 DC+230 AC/DC ULTRA <i>digital</i>
Setting range [A]				
TIG	4 - 180		4 - 230	
Electrode (BOOSTER)	20 - 150		20 - 180	
Electrode (fuse hold)	20 - 140		20 - 150	
Duty cycle (ED) at I <sub>max</sub> [%]				
TIG	40		35	
Electrode (BOOSTER)	30		40	
Electrode (fuse hold)	60		60	
Weld current at 100 % ED [A]				
TIG	140		160	
Electrode (BOOSTER)	130		140	
Electrode (fuse hold)	130		140	
Fuse (slow-blow) [A]	16			
Torch cooling	Gas			
Protection type	IP 23 S			
Power factor [cos phi]	0.99			
Power consumption at I <sub>max</sub> [kVA]	6.1		5.8	
Mains voltage [V]	1 x 230			
Mains frequency [Hz]	50 / 60			
Insulation class	F			
Control socket [pin]	19			
Welding cable socket [mm]	13			
Weight [kg]				
DC	7.5			
AC/DC	7.9			
Dimensions (LxWxH) [mm]	480 x 160 x 320			
Item no.				
DC without accessories	1503518	1503519	1503555	1503556
AC/DC without accessories	1503528	1503529	1503565	1503566

## THE VARIANTS



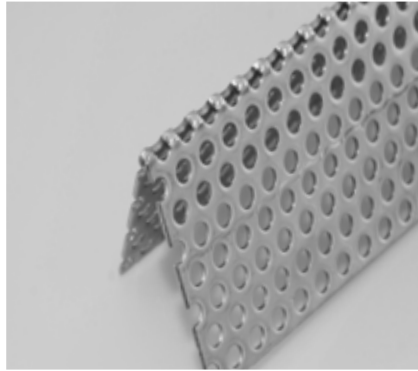
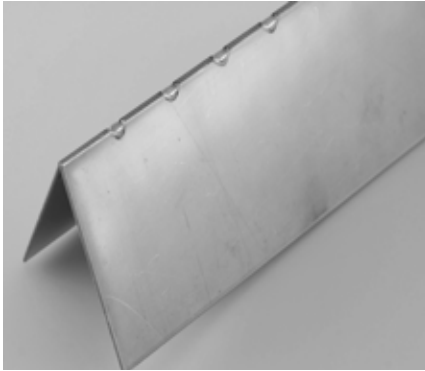
TIGER® *digital* 182/230 AC & AC/DC  
gas cooled



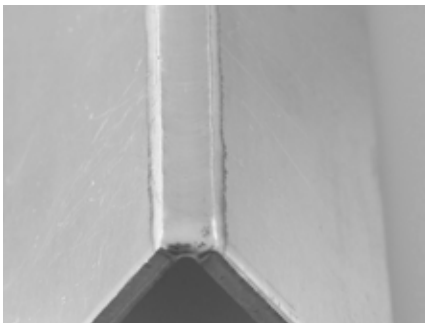
TIGER® *digital* 182/230 AC & AC/DC  
with water cooling unit



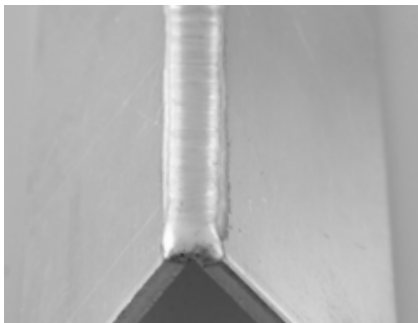
## ■ WELDING SEAMS TIGER® *digital* –THE RESULT COUNTS



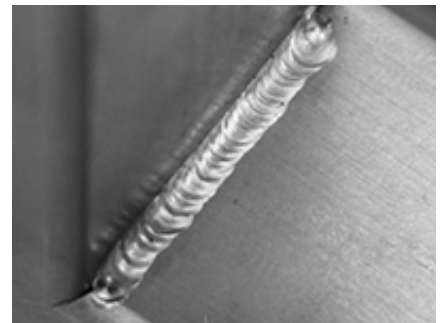
■ **Corner weld CrNi**  
1.0mm CrNi tacked with REHM **HYPER.SPOT**  
no warping, hardly any annealing colours.



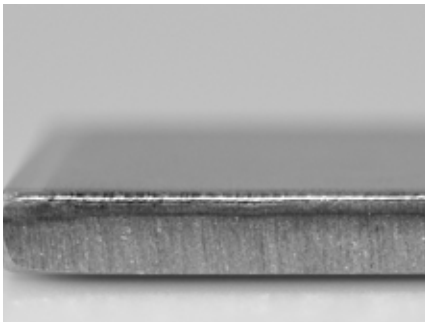
■ **Aluminium corner weld**  
Function: **AC + HYPER.PULS**  
without filler material



■ **Aluminium corner weld**  
Function: **AC**  
with filler material



■ **Fillet weld**  
Function: **HYPER.PULS**  
with filler material



■ **Corner weld**  
Function: **HYPER.PULS + INTERVAL**  
with filler material



■ **Corner weld**  
Function: **HYPER.PULS**  
with filler material



■ **Circumferential weld**  
Function: **HYPER.PULS**  
without filler material

## ■ POWER FACTOR CONTROLLER (PFC)

### THE BENCHMARK FOR EFFICIENT WELDING



- Compliance with the new regulation EU 2019/1784
- Highest energy efficiency
- Worldwide operation
- Clean consumption out of the supply network
- Use also in residential areas (useable anywhere)



You can find everything you need to know about PFC here: →

## ■ The TIGER® *digital* in the versions ULTRA and HIGH

### ULTRA version:

- Everything you could wish for
- Full range of functions
- High-end for mobile TIG welding

### HIGH version:

- Alternative, optimised for pipeline construction and assembly areas

## REHM TIGER® ULTRA / HIGH features

Function	ULTRA	HIGH	Function	ULTRA	HIGH
Gas pre-flows	Yes	Fix	DualWave	Yes	No
Ignition power	Yes	Fix	AC time DualWave	Yes	No
Starting current	Yes	Fix	DC time DualWave	Yes	No
Starting current time	Yes	Fix	Electrode with safety hold	Yes	Yes
Upslope	Yes	Fix	Electrode with booster function	Yes	Yes
Welding current 1	Yes	Yes	2 cycle with/without HF	Yes	Yes
Pulse time 1	Yes	Yes	4 cycle with/without HF	Yes	Yes
Welding current 2	Yes	Yes	Spot welding	Yes	Yes
Pulse time 2	Yes	Yes	Interval welding	Yes	No
Time pulses	Yes	Yes	Spot welding time	Yes	Fix
HYPER.PULS	Yes	No	Interval Pause time	Yes	No
HYPER.PULS frequency	Yes	No	AC waveform	Yes	Auto
Downslope	Yes	Yes	AC balance	Yes	Yes
End-crater current	Yes	Yes	AC frequency	Yes	Yes
End-crater current time	Yes	No	Automatic frequency adjustment	Yes	Yes
Gas post flow time	Yes	Yes	UP/Down control	Yes	Yes
TIG with HF	Yes	Yes	P1 to P4	Yes	Yes
TIG without HF	Yes	Yes	Assist	No	Yes
TIG DC	Yes	Yes	Assist Pro	Yes	No
TIG AC	Yes	Yes	Program memory	Yes	No
Current display	Yes	Yes	Setup	Yes	Yes

## ■ TIGER® *digital* Set – THE SPACE SAVING SOLUTION



### TIGER® *digital* Set plastic case

#### The case:

- Double-inlet made of high-quality foam
- Torch, ground cable and pressure reducer are stowed so that they cannot slide around
- The ergonomically designed handle ensures excellent carrying comfort

#### The set:

- TIGER® *digital* TIG torch R-TIG 211
- TIGER® *digital* ground cable
- Pressure reducer

## ■ TIGER® *digital* ACCESSORIES

### Remote foot controller



### Trolley



### Welding torch R-TIG 141, 211, 251



UP/DOWN FUNCTION, COMFORTABLE OPERATION

### R-TIG wear parts set



### Water cooling unit



DIMENSIONS IN MM (LXWXH): 430X210X235

# THE REHM PERFORMANCE PROGRAM

- REHM MIG / MAG welding machines
- REHM TIG welding machines
- REHM MMA electrode inverter
- REHM PLASMA cutting systems
- Welding accessories and consumables
- Welding fume extraction
- Technical welding advice
- Torch repairs
- Service

WEEE-Reg.-Nr. DE 42214869

REHM 09/2020 • Item no. 9903187

REHM GmbH u. Co. KG Schweißtechnik  
Ottostraße 2 | 73066 Uhingen | Germany

Tel.: +49 (0) 7161 3007-0  
Fax: +49 (0) 7161 3007-20

E-Mail: [rehm@rehm-online.de](mailto:rehm@rehm-online.de)  
Internet: [www.rehm-online.de](http://www.rehm-online.de)

## REHM – The benchmark for modern welding



 [facebook.com/REHMWeldingTechnology](https://www.facebook.com/REHMWeldingTechnology)